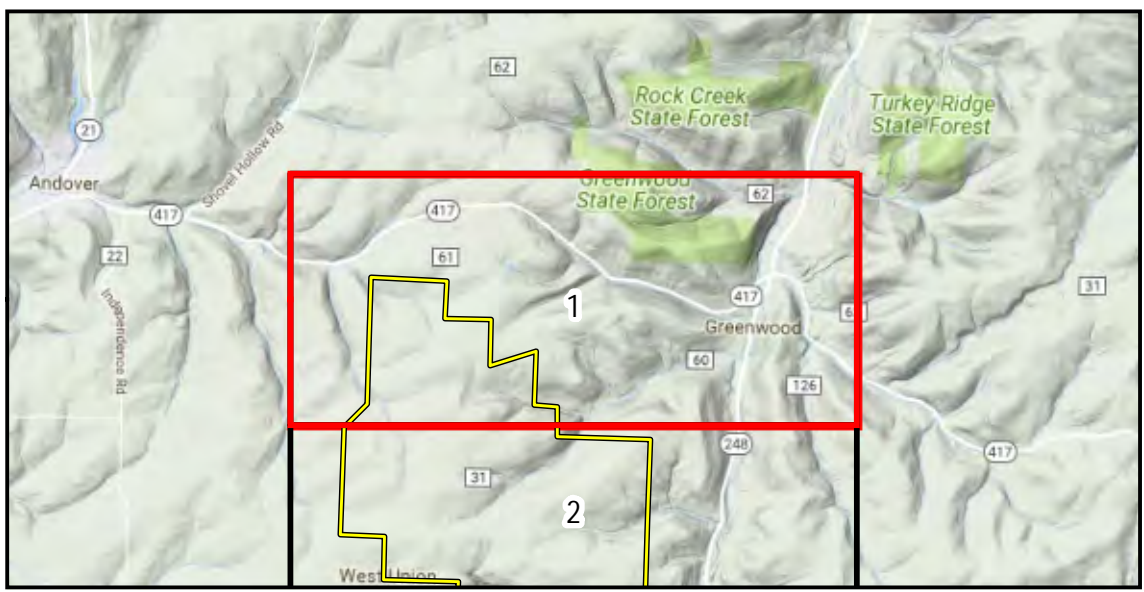
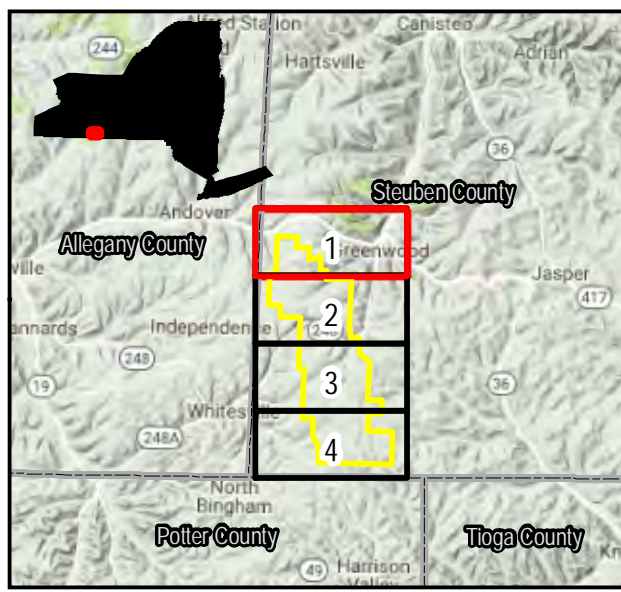


**Map Unit Symbol Definitions**

- Aa - Aiken silt loam
- AA - Aiton gravelly fine sandy loam, 0 to 3 percent slopes
- AIB - Aiton gravelly fine sandy loam, undulating
- ARC - Amot channery silt loam, 2 to 20 percent slopes
- BaB - Bath channery silt loam, 3 to 12 percent slopes
- BaC - Bath channery silt loam, 12 to 20 percent slopes
- BaD - Bath channery silt loam, 20 to 30 percent slopes
- BBE - Bath soils, steep
- BA - Braceville gravelly silt loam, 0 to 3 percent slopes
- Co - Carlisle muck
- Ch - Chenango channery silt loam, fan
- Ck - Chippewa channery silt loam, 0 to 3 percent slopes
- FL - Fluvaquents and Ochrepts
- HB - Homell-Fremont silt loams, 1 to 6 percent slopes
- HRC - Homell-Fremont silt loams, 6 to 12 percent slopes
- HgD - Homell and Fremont silt loams, 12 to 20 percent slopes
- HHE - Homell and Fremont silt loams, steep
- HoC - Howard gravelly loam, rolling
- HB - Howard-Madrial complex, undulating
- HRC - Howard-Madrial complex, rolling
- HRD - Howard-Madrial complex, 20 to 30 percent slopes
- KaD - Kanona silty clay loam, 6 to 20 percent slopes
- LaB - Lackawanna channery silt loam, 3 to 12 percent slopes
- LaC - Lackawanna channery silt loam, 12 to 20 percent slopes
- LC - Lackawanna-Wellsboro association, extremely stony
- LoB - Lordstown channery silt loam, 3 to 12 percent slopes
- LoC - Lordstown channery silt loam, 12 to 20 percent slopes
- LRE - Lordstown-Amot association, steep
- LRF - Lordstown-Amot association, very steep
- MaB - Mardin channery silt loam, 2 to 8 percent slopes
- MaC - Mardin channery silt loam, 8 to 15 percent slopes
- MaD - Mardin channery silt loam, 15 to 25 percent slopes
- MnB - Mardin and Volusia channery silt loams, silty substratum, 2 to 6 percent slopes
- MnC - Mardin and Volusia channery silt loams, silty substratum, 6 to 12 percent slopes
- Mp - Middlebury silt loam
- MB - Morris channery silt loam, 2 to 8 percent slopes
- MRC - Morris channery silt loam, 8 to 15 percent slopes
- MSB - Morris channery silt loam, gently sloping, extremely stony
- OC - Ochrepts and Orthents
- OgB - Oquaga channery silt loam, 3 to 12 percent slopes
- OgC - Oquaga channery silt loam, 12 to 20 percent slopes
- OgD - Oquaga channery silt loam, 20 to 30 percent slopes
- Pa - Palms muck
- Tg - Tioga silt loam
- TuB - Tuller channery silt loam, 0 to 6 percent slopes
- VoB - Volusia channery silt loam, 3 to 8 percent slopes
- VoC - Volusia channery silt loam, 8 to 15 percent slopes
- VoD - Volusia channery silt loam, 15 to 25 percent slopes
- W - Water
- Wn - Wayland soils complex, non-calcareous substratum, 0 to 3 percent slopes
- WoB - Wellsboro channery silt loam, 2 to 8 percent slopes
- WoC - Wellsboro channery silt loam, 8 to 15 percent slopes
- WoD - Wellsboro channery silt loam, 15 to 25 percent slopes



**Legend**

- Project Area
- Hydric Soils
- County Boundary
- Town Boundary

**Drainage Class**

- Well drained
- Moderately well drained
- Somewhat poorly drained
- Poorly drained
- Very poorly drained

Towns of Greenwood & West Union,  
Steuben County, New York

Sources: ESRI, TRC, NextEra, NYGIS, USDA

0 1,200 2,400  
Feet  
1 inch = 2,000 feet

**NextEra ENERGY RESOURCES**

**Eight Point  
Wind Energy Center**

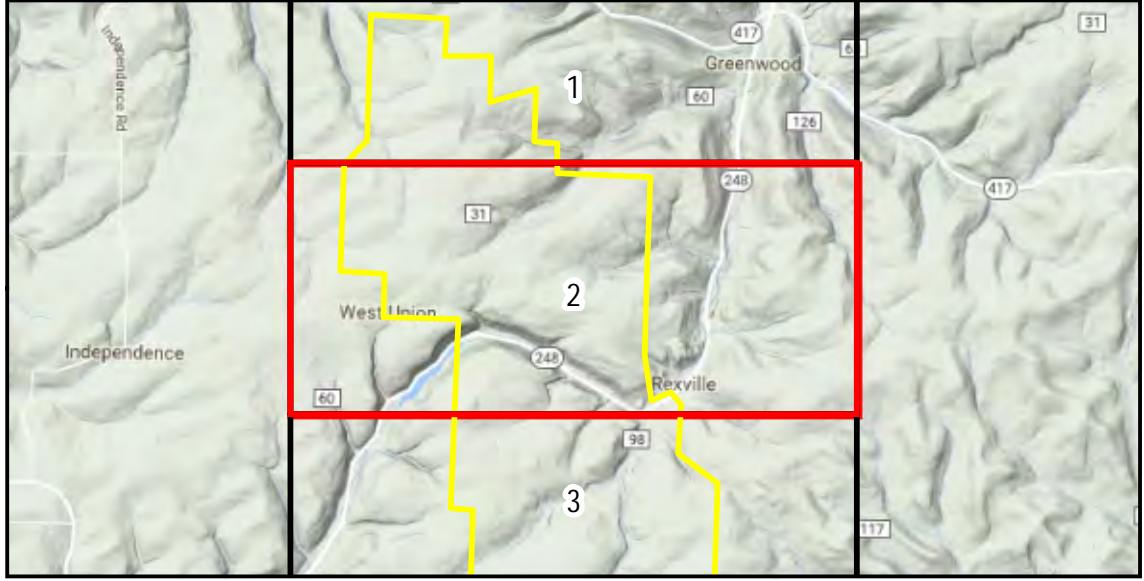
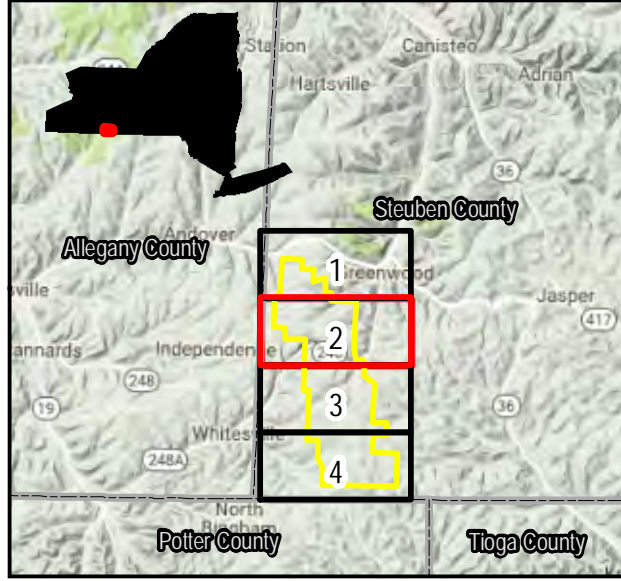
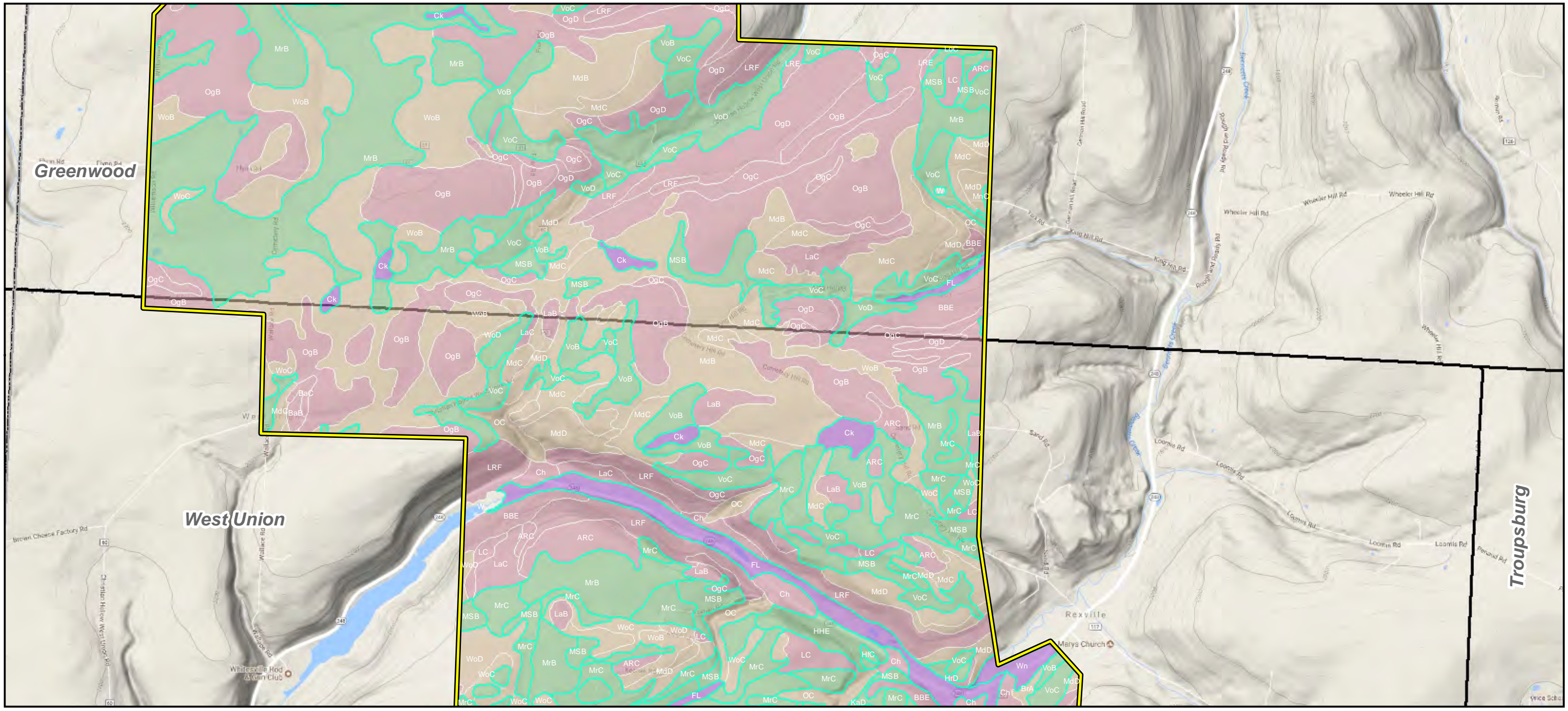
Figure 21-2  
Soil Types

---

Page 1 of 4 Revised: 10/4/2017

215 Greenfield Pkwy  
Liverpool, NY 13088

V:\PROJECTS\AUGUST\NextEra\246409\_Eight\_Point\Art\_10\_MXD\Fig\_21\_2\_Soils\_Pg\_1\_11x17L\_24K.mxd



**Legend**

- Project Area
- Hydric Soils
- NY County
- Town Boundary

**Drainage Class**

- Well drained
- Moderately well drained
- Somewhat poorly drained
- Poorly drained
- Very poorly drained

Towns of Greenwood & West Union,  
Steuben County, New York  
Sources: ESRI, TRC, NextEra, NYGIS, USDA

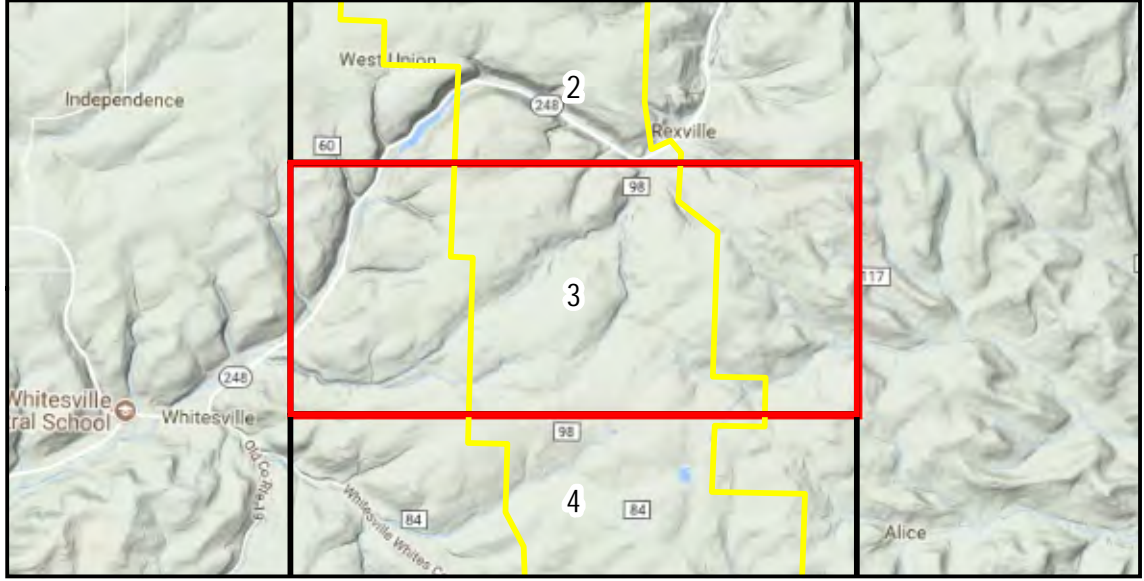
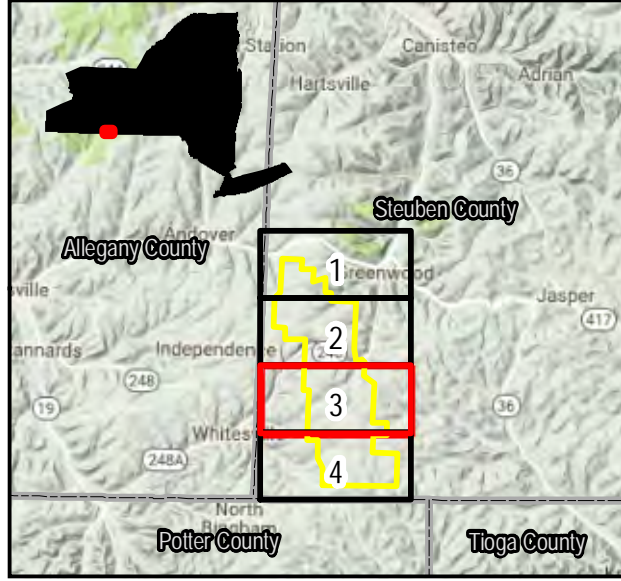
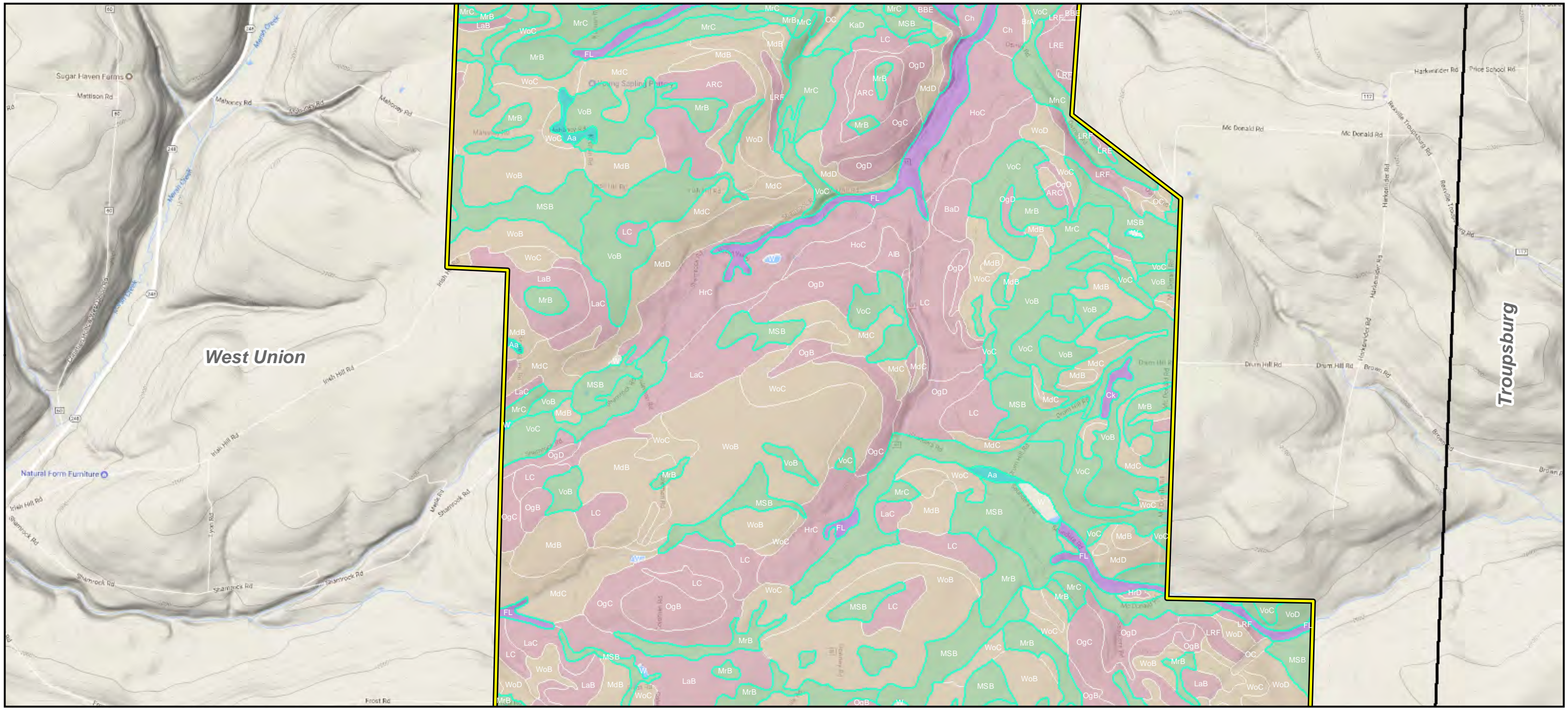
1 inch = 2,000 feet

**NEXTERA ENERGY RESOURCES**

**Eight Point  
Wind Energy Center  
Figure 21-2  
Soil Types**

Page 2 of 4 Revised: 10/4/2017

**TRC** 215 Greenfield Pkwy  
Liverpool, NY 13088



**Legend**

- Project Area
- Hydric Soils
- Well drained
- Moderately well drained
- Somewhat poorly drained
- Poorly drained
- Very poorly drained
- NY County
- Town Boundary

Drainage Class

0 1,200 2,400  
Feet

Towns of Greenwood & West Union,  
Steuben County, New York  
Sources: ESRI, TRC, NextEra, NYGIS, USDA  
1 inch = 2,000 feet

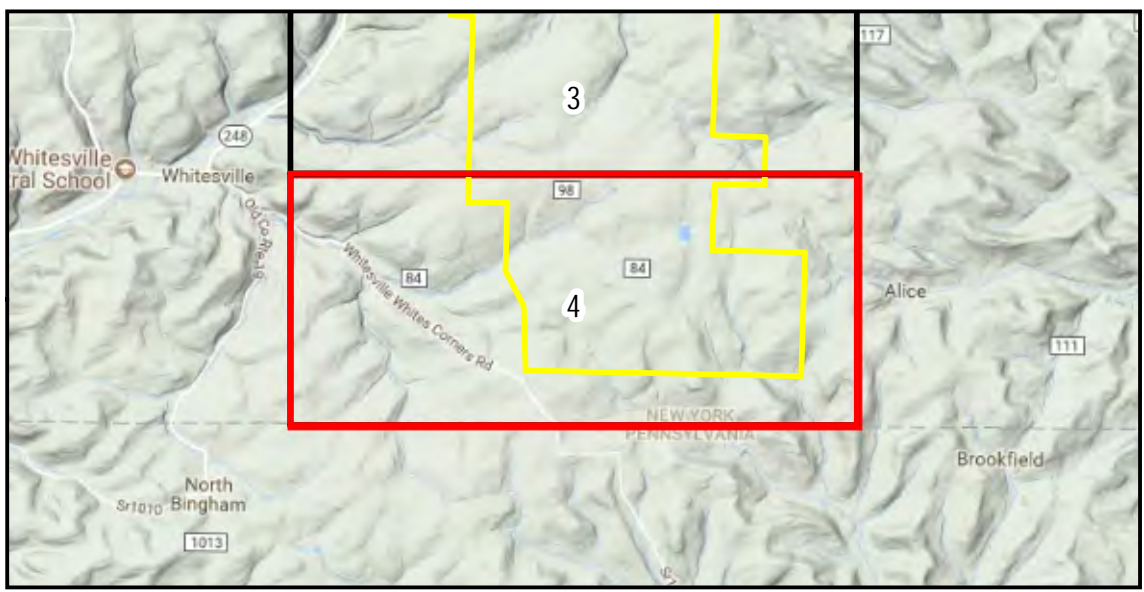
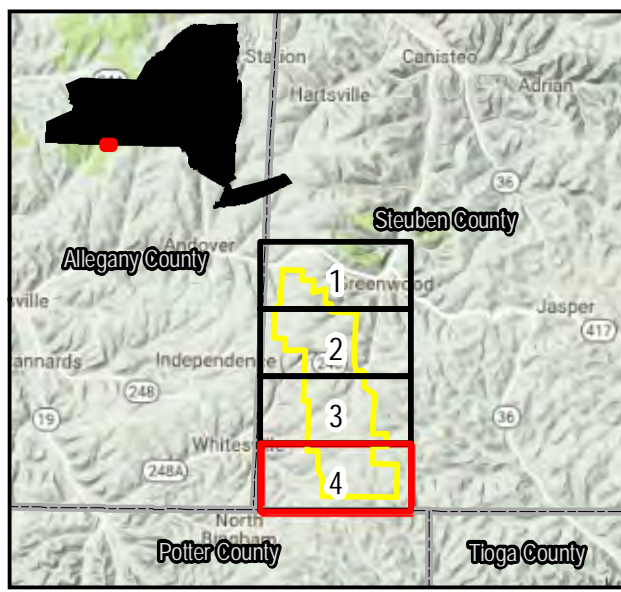
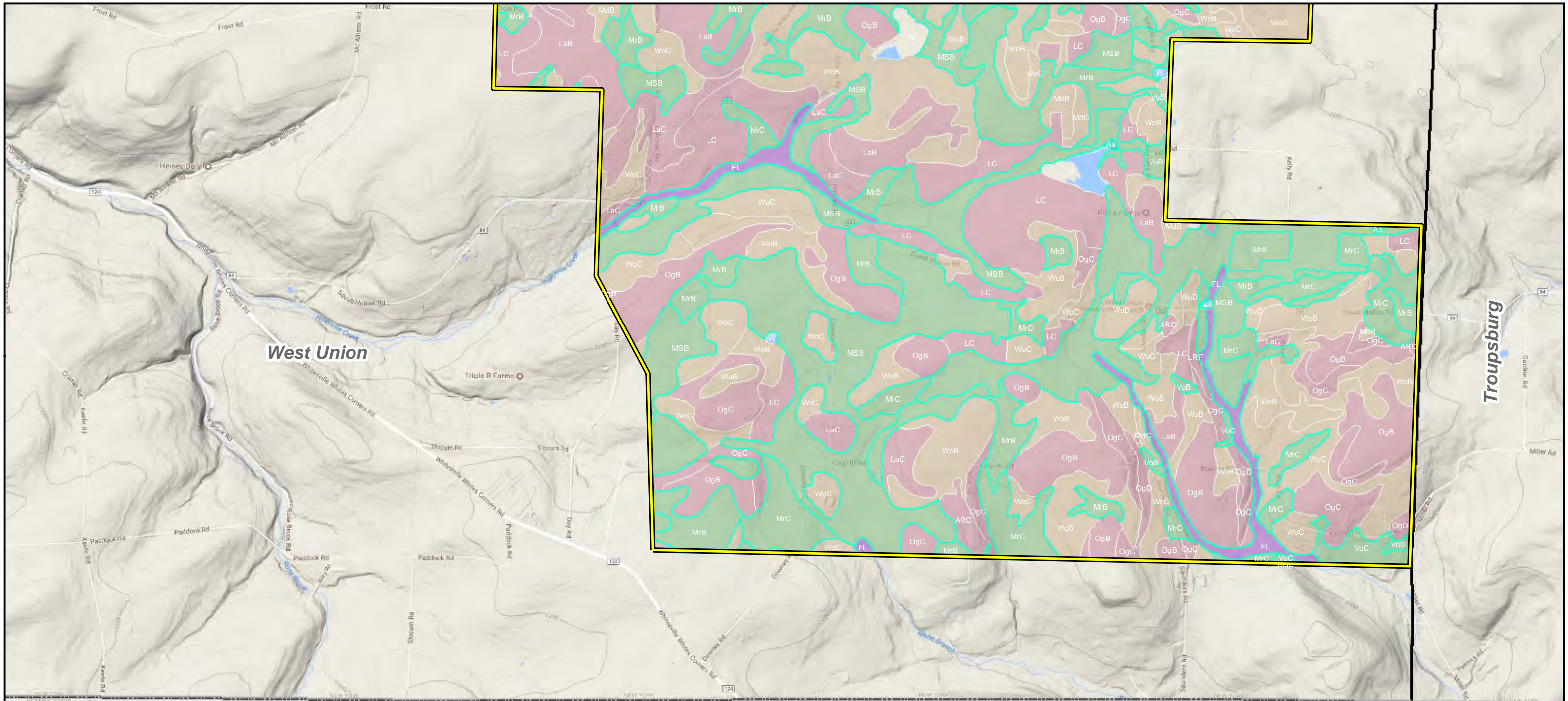
**NEXTERA ENERGY RESOURCES**

**Eight Point Wind Energy Center**  
Figure 21-2  
Soil Types

Page 3 of 4 Revised: 10/4/2017

**TRC** 215 Greenfield Pkwy  
Liverpool, NY 13088

V:\PROJECTS\AUGUST\NextEra\246409\_Eight\_Point\Art\_10\_MXD\Efig\_21\_2\_Soils\_T1X17L\_24K.mxd



**Legend**

- Project Area
- NY County
- Hydric Soils
- Town Boundary

**Drainage Class**

- Well drained
- Moderately well drained
- Somewhat poorly drained
- Poorly drained
- Very poorly drained

1 inch = 2,000 feet

Towns of Greenwood & West Union,  
Steuben County, New York  
Sources: ESRI, TRC, NextEra, NYGIS, USDA

**Eight Point  
Wind Energy Center**  
Figure 21-2  
Soil Types

---

Page 4 of 4 Revised: 10/4/2017

215 Greenfield Pkwy  
Liverpool, NY 13088

V:\PROJECTS\AUGUST\NextEra\21-2-Soils\_T1X17L\_24K.mxd