

Legend

- Proposed Turbine Location
- Permanent Meteorological Tower
- Overhead Collection Line
- Underground Collection Line
- Proposed Access Road

Receptor Locations

- Full Time
- Seasonal

Other Features

- Project Area
- Collection Substation
- O&M Building
- Laydown Yard

Towns of Greenwood & West Union
Steuben County, New York
Sources: ESRI, TRC, NextEra

0 1,000 2,000
Feet
1 inch = 2,000 feet

NEXTERA ENERGY RESOURCES

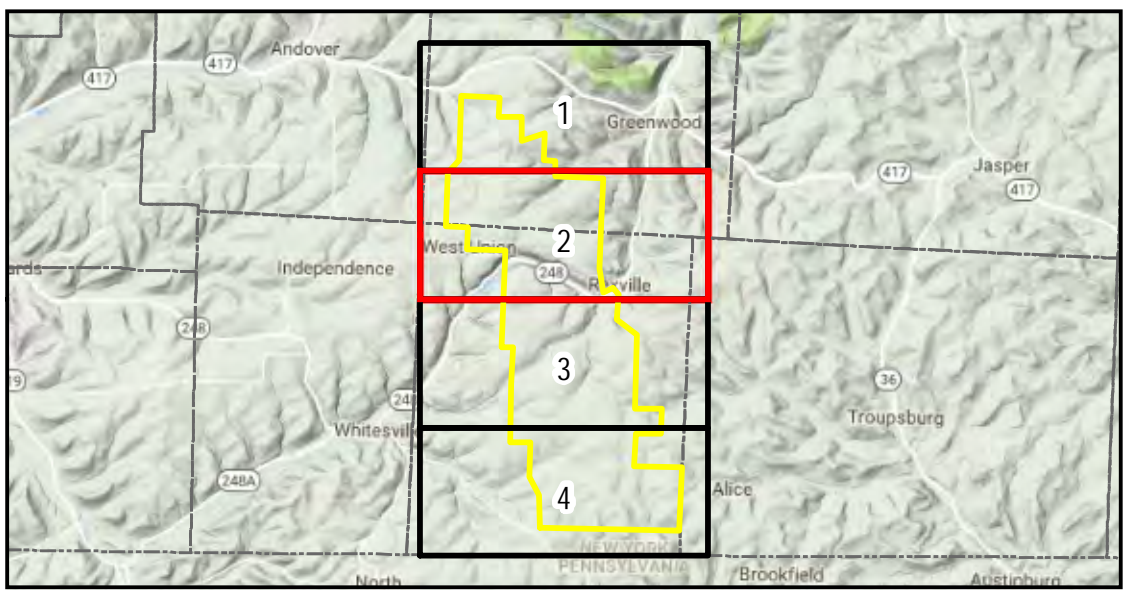
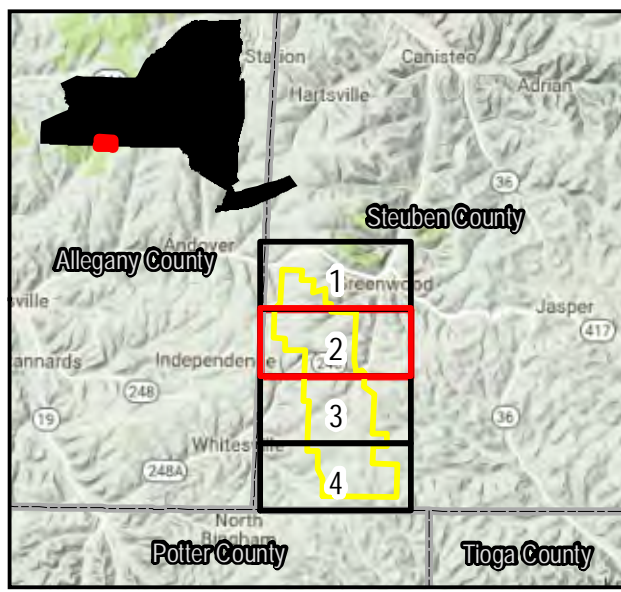
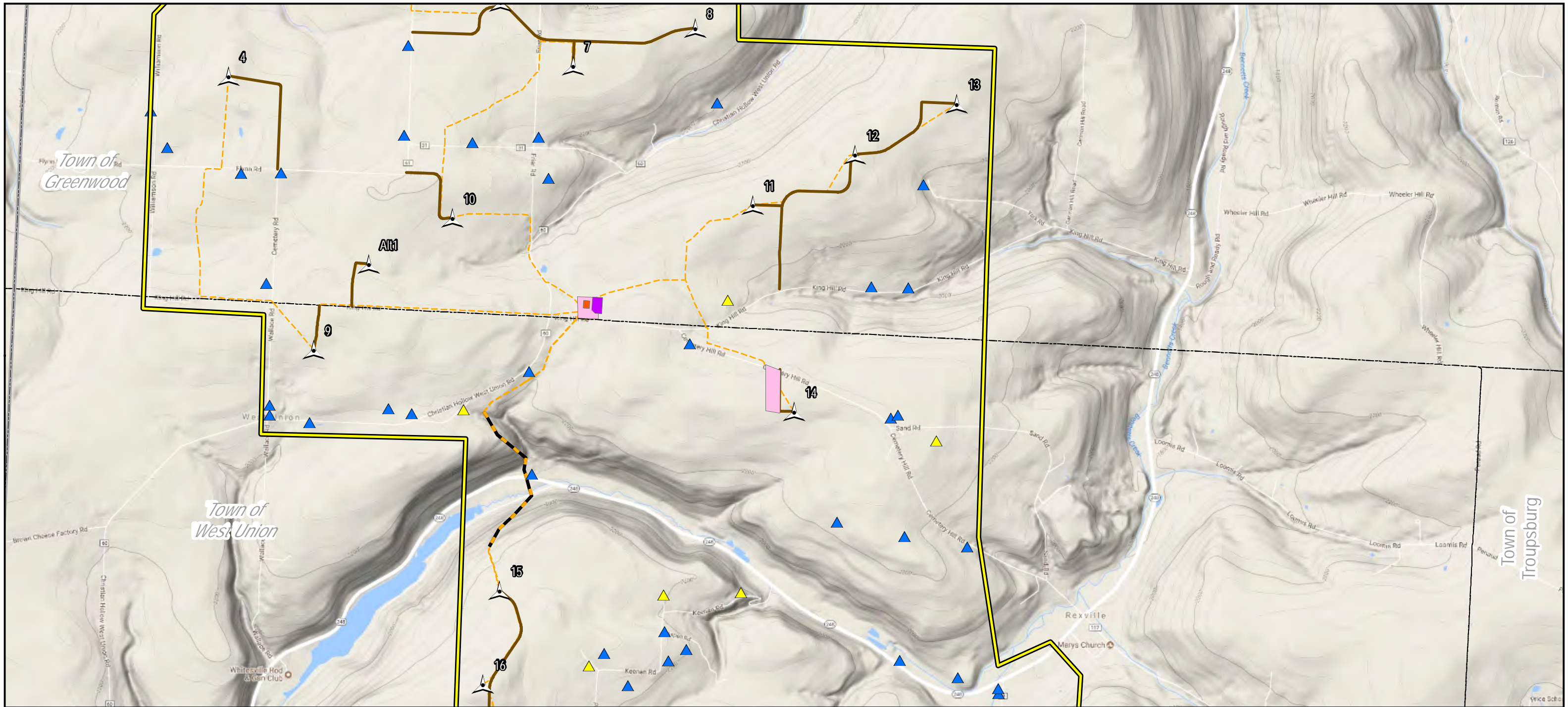
Eight Point Wind Energy Center

Figure 15-2
Receptor Locations

Page 1 of 4 Created: 10/9/2017

TRC 215 Greenfield Pkwy
Liverpool, NY 13088

V:\PROJECTS\AUGUST\NextEra\24609_Eqpt_Point\10_MXD\Fig_15-2_Receptor_Locations_11x17L_24K.mxd



Legend

- Proposed Turbine Location
- Permanent Meteorological Tower
- Receptor Locations
 - Full Time
 - Seasonal
- Project Area
- Collection Substation
- O&M Building
- Laydown Yard
- Overhead Collection Line
- Underground Collection Line
- Proposed Access Road

Towns of Greenwood & West Union
Steuben County, New York
Sources: ESRI, TRC, NextEra

0 1,000 2,000
Feet
1 inch = 2,000 feet

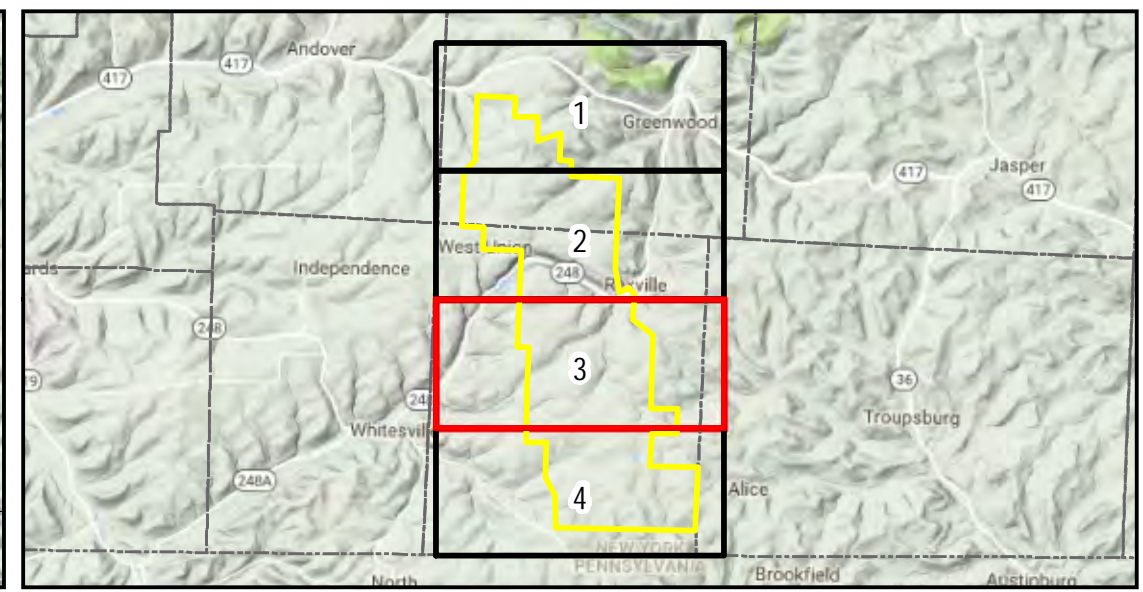
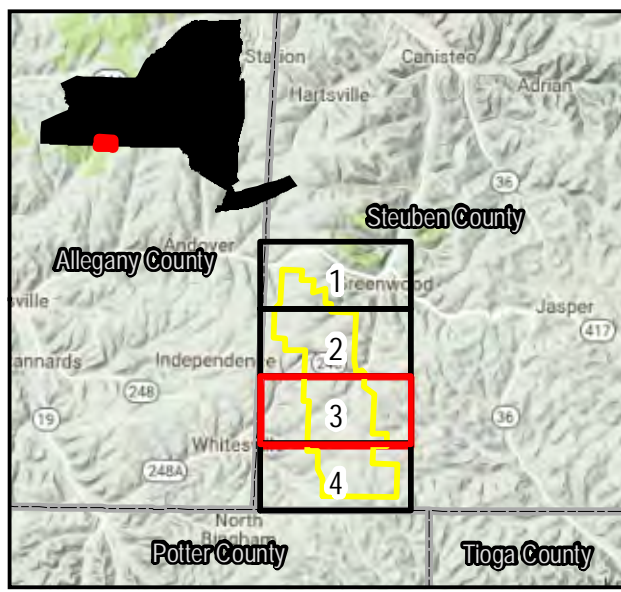
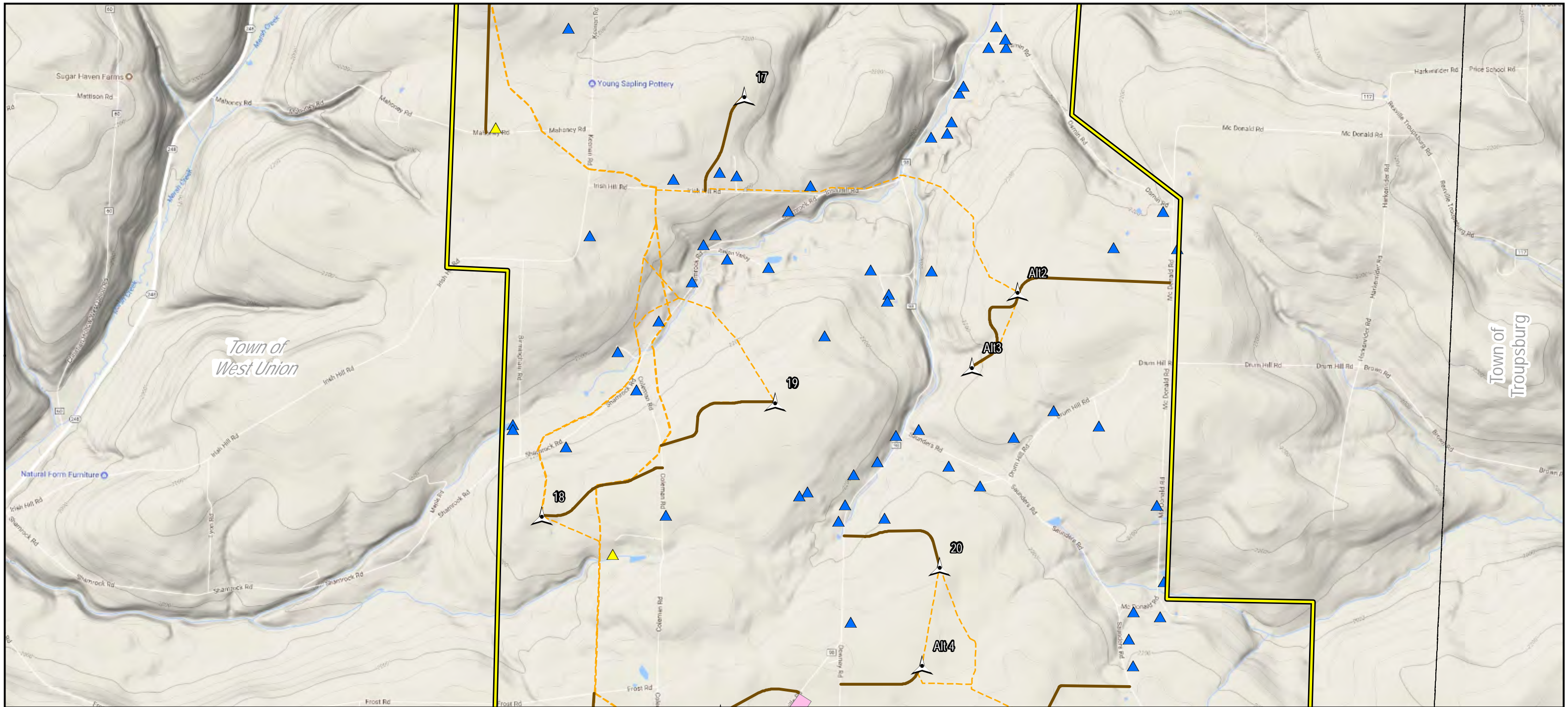
NEXTERA ENERGY RESOURCES

Eight Point Wind Energy Center

Figure 15-2
Receptor Locations

Page 2 of 4 Created: 10/9/2017

TRC 215 Greenfield Pkwy
Liverpool, NY 13088



Legend

- Proposed Turbine Location
- Permanent Meteorological Tower
- Receptor Locations
 - Full Time
 - Seasonal
- Project Area
- Collection Substation
- O&M Building
- Laydown Yard
- Overhead Collection Line
- Underground Collection Line
- Proposed Access Road

Towns of Greenwood & West Union
Steuben County, New York
Sources: ESRI, TRC, NextEra

0 1,000 2,000
Feet
1 inch = 2,000 feet

NEXTERA ENERGY RESOURCES

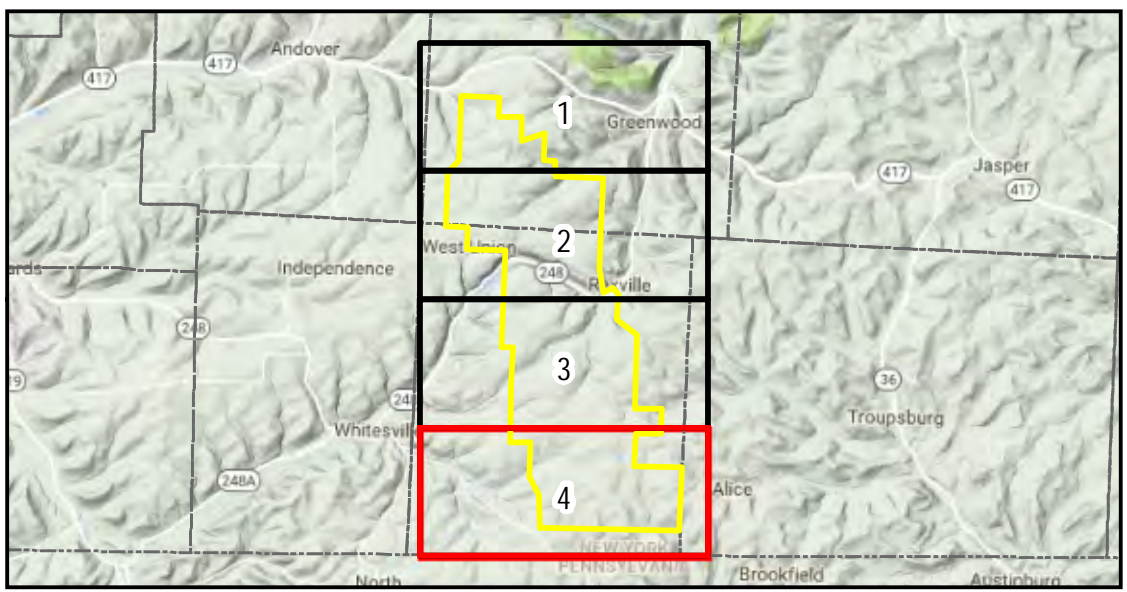
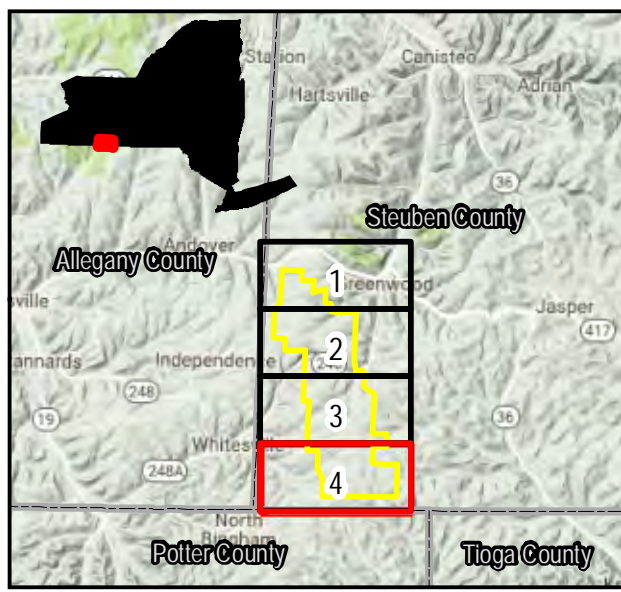
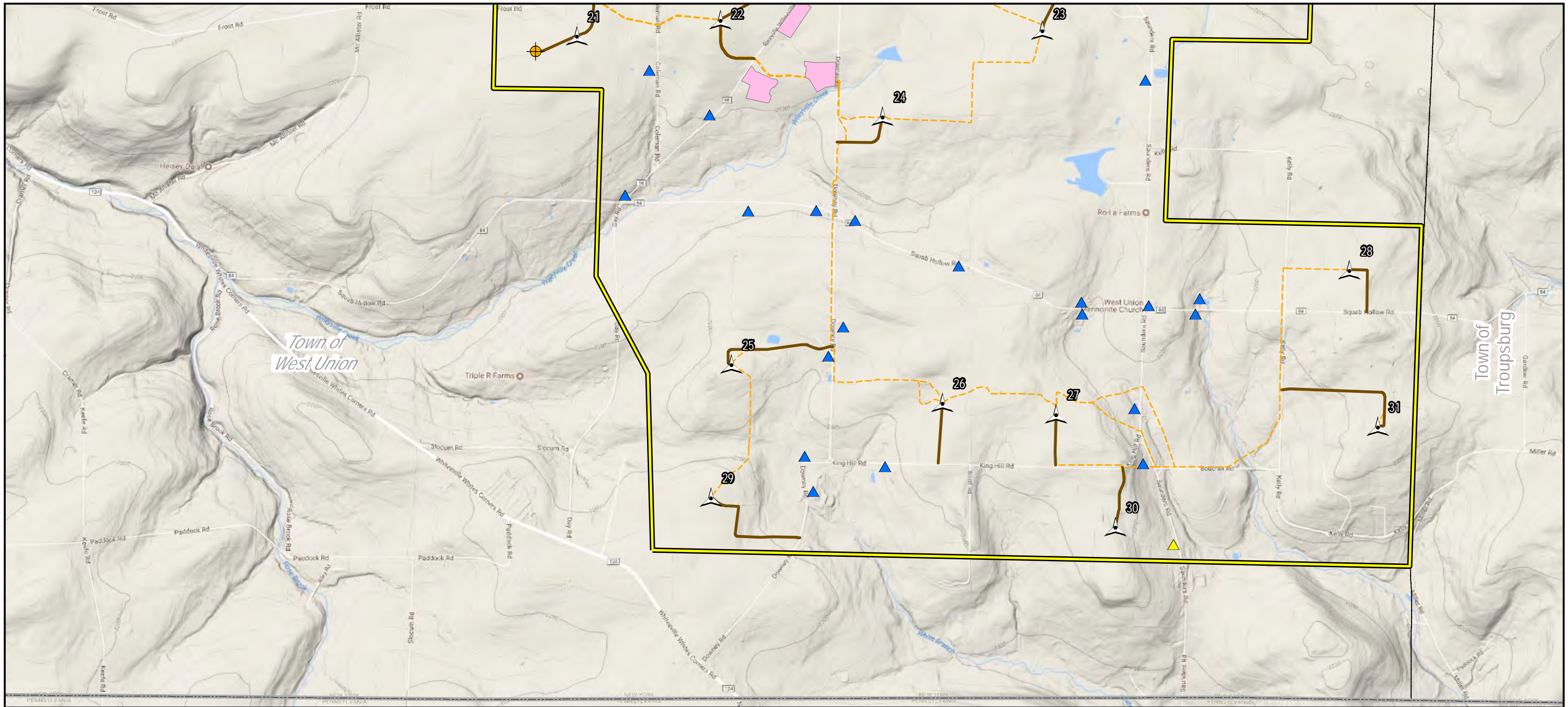
Eight Point Wind Energy Center

Figure 15-2
Receptor Locations

Page 3 of 4 Created: 10/9/2017

TRC 215 Greenfield Pkwy
Liverpool, NY 13088

V:\PROJECTS\AUGUST\NextEra\24609_Eqpt_Point\10_MXD\Fig_15-2_Receptor_Locations_11x17L_24K.mxd



Legend

- Proposed Turbine Location
- Permanent Meteorological Tower
- Overhead Collection Line
- Underground Collection Line
- Proposed Access Road

Receptor Locations

- Full Time
- Seasonal

Other Features

- Project Area
- Collection Substation
- O&M Building
- Laydown Yard

Towns of Greenwood & West Union
Steuben County, New York
Sources: ESRI, TRC, NextEra

0 1,000 2,000
Feet
1 inch = 2,000 feet

NEXTERA ENERGY RESOURCES

Eight Point Wind Energy Center

Figure 15-2
Receptor Locations

Page 4 of 4 Created: 10/9/2017

TRC 215 Greenfield Pkwy
Liverpool, NY 13088

V:\PROJECTS\AUGUST\NextEra\246409_Eqmt_Point\10_MXD\Fig_15_2_Receptor_Locations_11x17L_24K.mxd