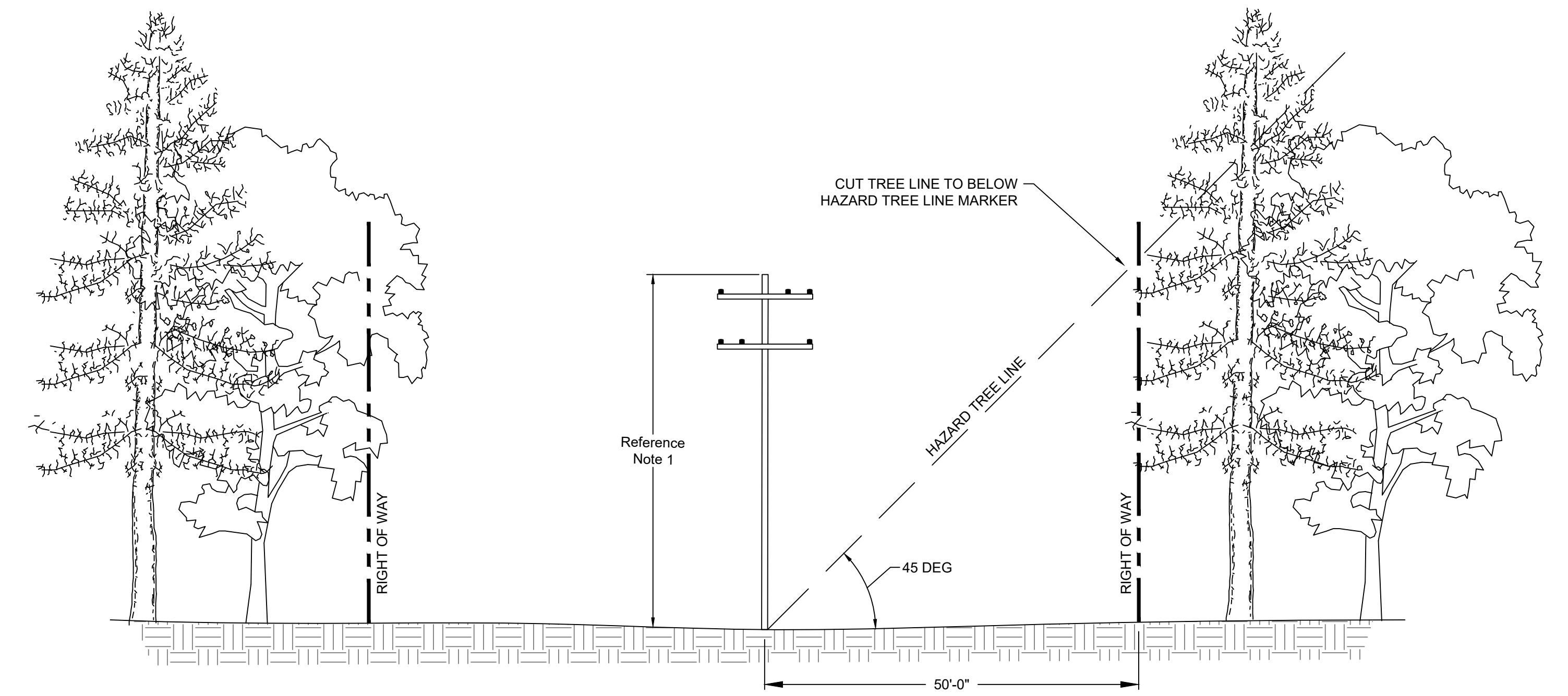


SINGLE CIRCUIT (OVERHEAD)
SCALE: N.T.S.



DOUBLE CIRCUIT (OVERHEAD)
SCALE: N.T.S.

NOTES:

1. STRUCTURE DRAWN AT 50FT. STRUCTURE HEIGHT VARIES FROM 50 TO 70FT
2. COLLECTOR SYSTEM RIGHT-OF-WAY IS 100 FT WIDE. VEGETATIVE CLEARING IS LIMITED TO 50 FT WIDE UNLESS SPECIFIC SITE CONDITIONS REQUIRE MORE EXTENSIVE CLEARING

PRELIMINARY NOT FOR CONSTRUCTION

UNDER NEW YORK STATE EDUCATION LAW ARTICLE 145 (ENGINEERING), SECTION 7209 (2), IT IS A VIOLATION OF THE LAW FOR ANY PERSON, UNLESS ACTING UNDER THE DIRECTION OF A LICENSED PROFESSIONAL ENGINEER, TO ALTER THIS DOCUMENT.

		249 Western Avenue Augusta, ME 04330		PROJECT NO: 246409		
REV	DESCRIPTION	DATE	DES	CHK	APP	
B	PRE-FINAL CLIENT REVIEW	08/04/17	TRC	PMM	AMW	
A	ISSUED FOR CLIENT REVIEW	04/14/17	TRC	PMM	AJW	

TRC DESIGNED MJP DRAWN AMW CHECKED AJW APPROVED	COLLECTOR DETAILS EIGHT POINT WIND ENERGY CENTER EIGHT POINT WIND, LLC GREENWOOD / WEST UNION NEW YORK		REV. B
REVIEW 1 REVIEW 2	03/17 DATE AS NOTED SCALE		D-17



246409-DETAILS COLLECTOR.dwg 2017.08.08